

EAT•N

Cutler-Hammer

Residential Renovation Loadcenters and Accessories

Product Focus

Replaces existing
fuse boxes or
loadcenters





Manufacturing Practical Products for the Contractor

We heard you! After much input from service contractors, we've developed an easier, safer, and neater renovation loadcenter. Reflecting your needs and reducing your inventory costs, these panels and accessories are proving worthwhile for contractors tapped into the renovation market.

Renovation Loadcenter – Quick and Clean Installation

Designed specifically for the service contractor, this is the **only** renovation line in the industry.

- Builds upon the platform of excellence achieved with the CH Loadcenter.
- Features a patent-pending five-circuit terminal block that is factory mounted in the top left corner of the loadcenter.
- Terminal Block is field-adjustable to meet onsite needs and can be doubled-up to provide access to ten circuits.
- No need for expensive and frustrating wire nuts.
- Uses CH branch breakers.
- The twin-stacked, neutral design places the neutral and ground terminations higher in the loadcenter.

Conventional Loadcenter Upgrade

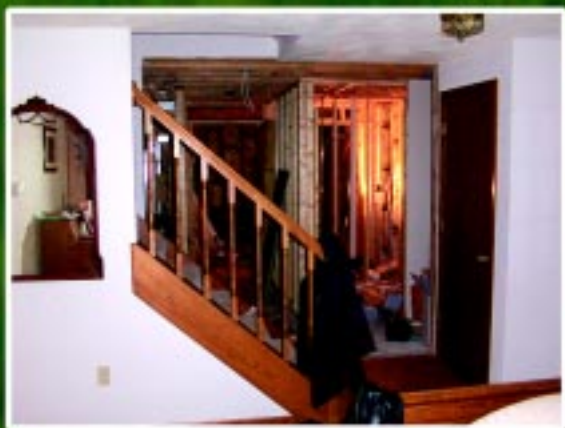


Cutler-Hammer Renovation Loadcenter Upgrade

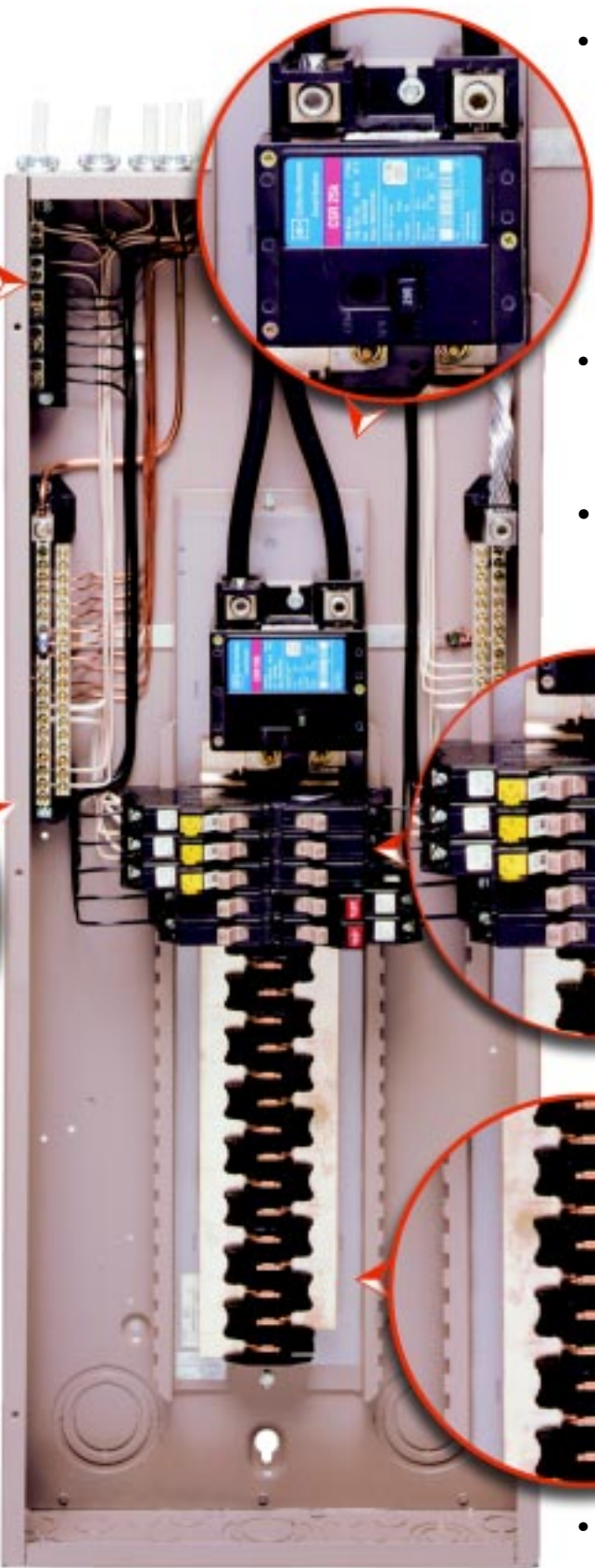




According to the latest statistics, 53.6% of the dollars spent in the residential market go toward renovation.



Designed specifically for service upgrades:

- 
- Exclusive, Factory Installed Five-Circuit Terminal Block can be field adjusted to the right hand corner of the loadcenter.
 - 25 kAIC Commercial Grade Main Breaker
 - Provision for a Second Terminal Block
 - CH Breakers trip to "off" for ease of operation for homeowners
 - Shortened/Stacked Neutrals allow existing ground and neutral wires to be terminated without wire nuts.
 - Silver plated copper bus for superior conductivity

Breakers & Accessories

Type CH Circuit Breakers -

Install the best. Type CH 3/4-inch circuit breakers trip to off for ease of operation and fewer call backs. Breakers rated 15, 20 and 30 amperes have lugs approved for (2) #10 through #14 wires for more installation flexibility. Cutler-Hammer Type CH breakers also carry a lifetime warranty – the best in the industry.



Whole Home Surge Protection

-You have two choices when implementing surge protection for the entire home.

1. The Whole Home Surge Protector (CHSP 3-Way™) offers standard protection for all home electronic equipment and installs easily and cleanly into a renovation loadcenter. With a surge current rating of 40kA, it protects AC power lines, up to 4 telephone lines, and 1 cable/satellite feed.
2. The CHSP Ultra™ is the most advanced AC surge suppression product to

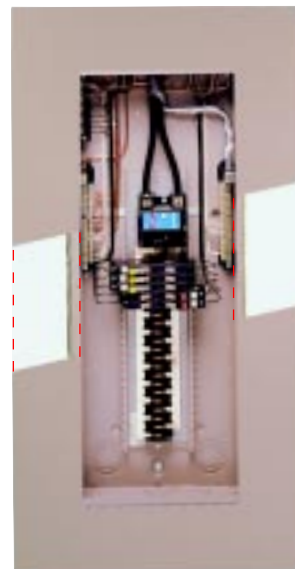
date. Along with the following accessories:

- **SurgeTel™** protects four telephone and modem lines.
- **SurgeCable™** protects two cable and/or satellite TV lines.
- **SurgeEthernet™** provides innovative protection for high speed Internet service. It can be mounted on the sides, top, or bottom of a renovation loadcenter.

Dry Wall Bracket

Do you hate dealing with dry wall repair? You can install and move on when you use Cutler-Hammer Dry Wall Brackets. This additional trim covers dry wall gaps and makes your installation look cleaner than ever. Provides a two-inch overhang beyond the flush cover.

Get more work and more revenue by specifying Cutler-Hammer renovation products and services by Eaton Corporation. You'll encourage add-on callbacks when you differentiate yourself with true renovation solutions.



Ordering Information

SINGLE-PHASE – MAIN CIRCUIT BREAKER RENOVATION LOADCENTERS 25,000A INTERRUPTING CAPACITY

Single-Phase, 3-Wire – 120/240V AC – Factory Bonded Stacked Split Neutral

Main Type Breaker	Main Ampere Rating	Maximum Number Circuit	Enclosure Type	Box Size	Wire Size Range Cu/Al 60°C or 75°C for Main Breaker	Catalog Number (order covers separately)	Cover Catalog Numbers		Drywall Bracket
							Flush	Surface	
CH (10 kAIC)	100	22	Indoor	C	#4-1/0	CH22B100CRN	CH8CF	CH8CS	CH8JFC1926
CSR	150	32	Indoor	J	#2-300 kcmil	CH32B150JRN	CH8JF	CH8JS	CH8JFC1939
CSR	200	32	Indoor	J	#2-300 kcmil	CH32B200JRN	CH8JF	CH8JS	CH8JFC1939
CSR	200	42	Indoor	K	#2-300 kcmil	CH42B200KRN	CH8KF	CH8KS	CH8KFC1942

Note: All main circuit breaker loadcenters are listed for use as service entrance equipment. Loadcenters are factory bonded for service entrance applications. Remove bonding strap for separate neutral and ground bars for sub-feed applications.

Renovation Panel

Description	Catalog Number
5-Circuit Terminal Block	RN5TB
Ground Bar Kits 14 hole	GBK14
Ground Bar Kits 21 hole	GBK21

UL is a federally registered trademark of Underwriters Laboratories Inc. The National Electrical Code and NEC are registered trademarks of the National Fire Protection Association, Quincy, Mass.

Eaton's Cutler-Hammer business is a worldwide leader providing customer-driven solutions. From power distribution and electrical control products to industrial automation, the Cutler-Hammer business utilizes advanced product development, world-class manufacturing, and offers global engineering services and support. To learn more about Eaton's innovative Cutler-Hammer products and solutions call 1-800-525-2000, for engineering services call 1-800-498-2678, or visit www.cutler-hammer.eaton.com.

Eaton is a global \$7.2 billion diversified industrial manufacturer that is a leader in fluid power systems; electrical power quality, distribution and control; automotive engine air management and fuel economy; and intelligent truck systems for fuel economy and safety. Eaton has 51,000 employees and sells products in more than 50 countries. For more information, visit www.eaton.com.

Eaton Corporation
Cutler-Hammer business unit
1000 Cherrington Parkway
Moon Township, PA 15108-4312
United States
tel: 1-800-525-2000
www.cutler-hammer.eaton.com

EATON

Cutler-Hammer

©2003 Eaton Corporation
All Rights Reserved
Printed in USA
Form No. BR00301003E / CSS 19020
March 2003